



XSHELL

THE INDUSTRY'S MOST POWERFUL SSH CLIENT

Xshell is a powerful terminal emulator that supports SSH1, SSH2, SFTP, TELNET, RLOGIN, SERIAL, and RDP. Delivering industry leading performance, Xshell includes a combination of features and advantages not found in other SSH clients. Xshell 8 now makes it even easier to manage your sessions by including new features such as a Remote File Manager, Tab Manager, Script Recording, Jump Host Proxy, and more. Also, with support for CMD, Powershell, WSL from within Xshell's Local Shell, users can access vital tools without interrupting their workflow.

The screenshot displays the Xshell 8 interface with the following components:

- Session Manager:** A tree view on the left showing session categories like 'Personal' (Local, CMD, Linux Mint, Local Shell, Powershell, WSL, Pa5, ThinkpadRDP) and 'Work' (Site A, Site B, Test Services, Web Services).
- Terminal Window (nscB-06):** Shows a Linux shell prompt with the command `ls -l` and its output listing files and directories with permissions, owner, group, size, date, and name.
- System Monitoring (nscA-01):** A dashboard showing CPU usage (0.86, 0.87, 0.82), Memory usage (100%), Network speed (1.5), and Processes (1940 btm, 0.5%).
- Local Shell:** A terminal window running a ping command to `netsarang.com [18.239.199.119]` with 32 bytes of data, showing response times and TTL values.

BENEFITS

A Superior Terminal Experience

Xshell 8 allows for a multitude of customizations in order to meet the demands of today's fast paced environment. Define mouse/keyboard behavior, logging options, multi-line paste options, text editors, and more. Tailor Xshell's layout and choose what goes where all with a simple drag and drop. With Xshell 8, you're in control.

Keep Your Data Safe

In an ever changing cyber environment, it's important to take the necessary precautions to secure your data. Xshell 8 supports RSA/DSA/ECDSA/ED25516 Public key, Password, and Keyboard Interactive, GSSAPI, PKCS#11, and CAPI authentication. Encrypt your traffic with a continuously updated list of encryption algorithms and safely store session files in the cloud with Xshell's Master Password feature.

Management Made Easy

Combining Xshell 8's powerful features with its tabbed environment allows you to interact with your sessions like never before. Optimize your workflow with features such as the Session Manager, Compose Pane, Highlight Sets, Quick Commands, Instant Tunneling, and much more. Let Xshell 8 handle the heavy lifting.

NEW FEATURES

Authentication Profiles ^{NEW}

Authentication Profiles are a saved set of authentication variables you can quickly apply to any session file. If the authentication information is the same for multiple sessions, simply select the authentication profile instead of repeatedly entering authentication information for each session. Additionally, if the authentication information changes due to company policy, etc., you can easily modify the authentication information for every affected session by simply editing the Authentication Profile once.

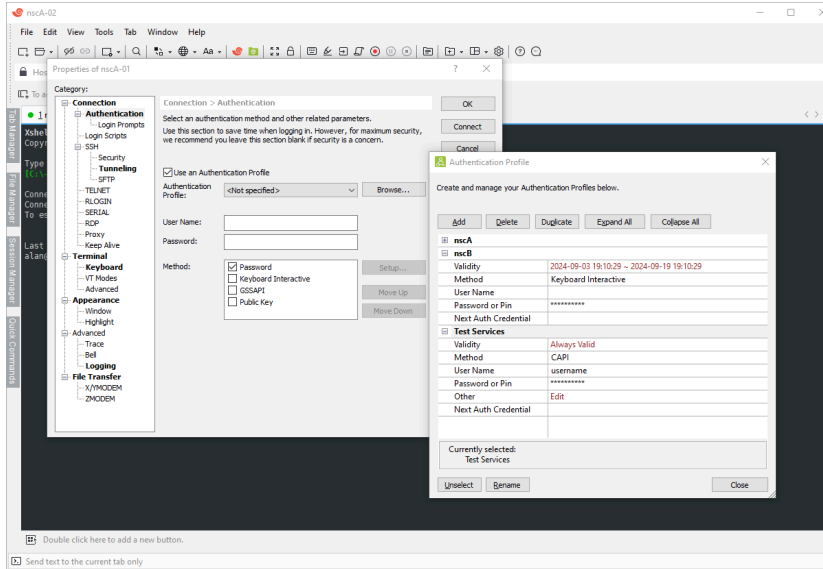
SPECIFICATIONS

Key Features

- › Authentication Profiles ^{NEW}
- › Triggers ^{NEW}
- › Windows Notifications ^{NEW}
- › Quick Command Manager ^{NEW}
- › Integrated Log Viewer ^{NEW}
- › Hex Viewer ^{NEW}
- › RDP Support ^{NEW}
- › Quick Start ^{NEW}
- › Script Argument Support ^{NEW}
- › Tab Manager
- › Inheritable Session Properties
- › Script Recording
- › Enhanced Scripting
- › Jump Host Proxy
- › Session Manager
- › Dockable UI
- › Compose Pane
- › Search Web for Selected Text
- › IPv6 support
- › Custom key mapping
- › VB, Jscript, and Python Scripting support
- › Global input
- › Auto reconnections
- › Local Windows command support
- › Detachable tabs

Security

- › OpenSSH CA Authentication
- › PKCS#11 and CAPI Support
- › AES, 3DES, BLOWFISH, CAST128, ARCFOUR, RIJNDael, CHACHA20 encryption algorithms
- › GSSAPI Support
- › Master Password
- › RSA/DSA/ECDSA/ED25519 Public key, Password and Keyboard interactive user authentication



- ▶ New key generation wizard and import/export features
- ▶ SSH authentication agent forwarding using Xagent

Tunneling

- ▶ Instant Tunneling
- ▶ TCP/IP and X11 forwarding
- ▶ Dynamic Port Forwarding (SOCKs)

Terminal

- ▶ Real Windows CMD
- ▶ Powershell and WSL Commands
- ▶ SCP Command
- ▶ Command Aliases
- ▶ Multi-Line Paste Options
- ▶ Highlight Sets
- ▶ Horizontal Scroll Bars
- ▶ Dual font support
- ▶ Compose Pane
- ▶ Bell/Alarm Options
- ▶ Supports SSH1, SSH2, SFTP, TELNET, RLOGIN, RDP, and SERIAL protocols
- ▶ Supports VT100, VT220, VT320, XTERM, LINUX, SCOANSI, and ANSI terminals
- ▶ Full Screen view
- ▶ Keep-alive option
- ▶ Line spacing and margin
- ▶ Dynamic port forwarding and Instant tunneling
- ▶ Address bar for quick connection
- ▶ Login script support
- ▶ International output encoding
- ▶ Multi-byte support in copy & paste
- ▶ Bold font and ANSI color escape sequences

Appearance

- ▶ Dockable UI
- ▶ Theme Selection

Triggers NEW

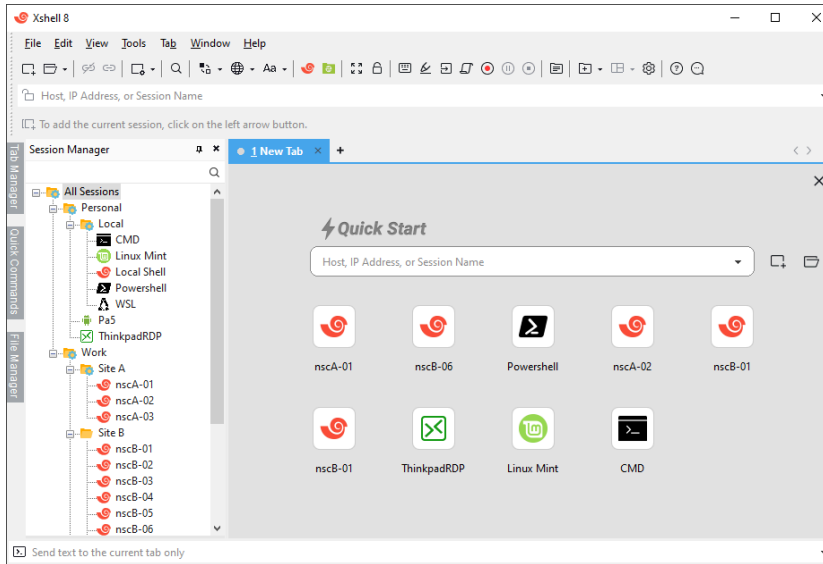
Triggers can be used to detect when a specific string appears in the terminal and subsequently perform specific actions such as sending a string or executing a script. If you are executing critical commands or monitoring multiple servers, this feature can help prevent unexpected incidents or take immediate action.

Quick Command Manager NEW

Version 8 introduces a Quick Command Manager. It supports a tree structure to manage multiple Quick Commands and their Sets. Now you can easily access every Quick Command and Quick Command Set even if it isn't registered in a particular session's properties.

Quick Start NEW

In addition to the existing text-based Local Shell tab, Xshell 8 includes a new graphical tab which provides a more convenient way to run a session. Recent sessions will be displayed on this screen for quick access or you can run a new session by entering the hostname, IP address, or session file name. Each newly opened tab will display the Quick Start screen. To instead have each new tab open in the Local Shell, go to Options → Advanced → “Open new tab as local shell”.



- ▶ Layout management
- ▶ Tabbed environment
- ▶ Color scheme
- ▶ edit/import/export feature

Interoperability

- ▶ X11 forwarding with Xmanager
- ▶ File transfers with Xftp

File Management

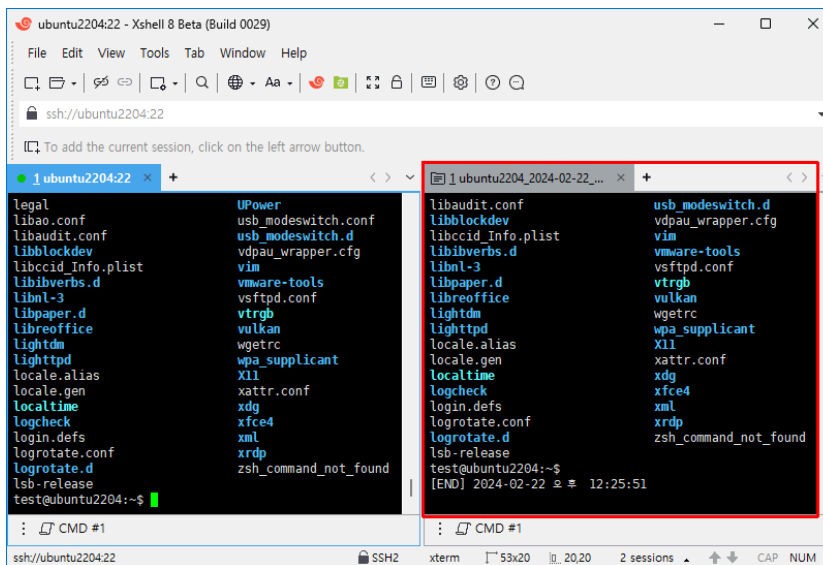
- ▶ Remote File Manager
- ▶ File transfers using X/Y/ZMODEM
- ▶ File send and receive via SFTP
- ▶ ASCII file upload
- ▶ Send Delay
- ▶ Automatic session logging

Hex Viewer NEW

Xshell 8 includes a Hex Viewer which expresses packets coming from a remote server as hexadecimal values. This allows you to identify characters that are not visible on the screen.

Integrated Log Viewer (Log Interpreter) NEW

Xshell can record and log terminal progress, including terminal code. Version 8 includes a built-in log viewer and interpreter which allows you to view the log in color as well as any dynamic progress.

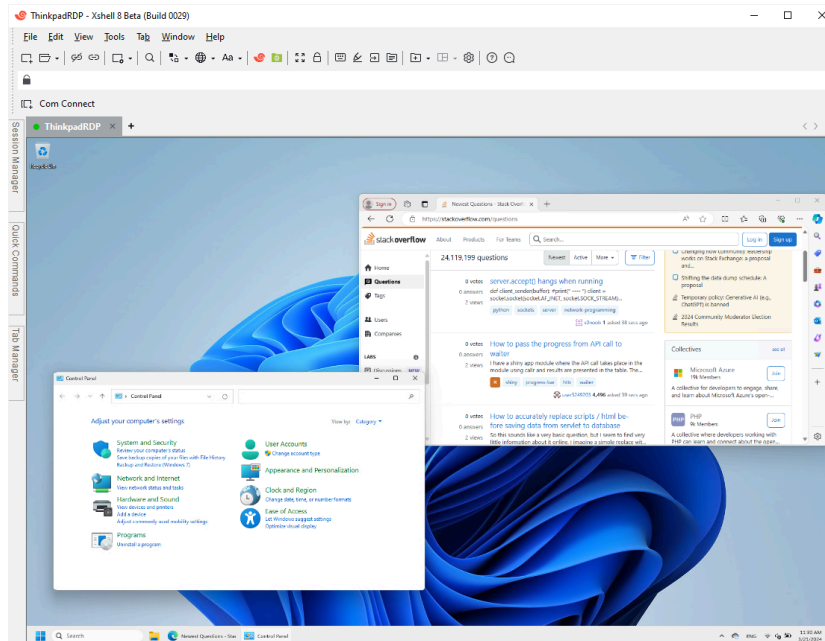


Customize Session Icons ^{NEW}

The icons for each session file can now be customized by the user. The icon is displayed in the Session Manager and the session's tab to make it easier to distinguish between sessions when working.

RDP Support ^{NEW}

Xshell 8 supports the Microsoft Remote Desktop (RDP) protocol allowing you to make remote connections to Windows machines. This functionality also allows you to make remote GUI connections to UNIX or Linux servers as long as they have xrdp installed and running.



Script Argument Support ^{NEW}

When running VBS, JS, Python scripts, they can now accept arguments. This functionality is available in a session's properties Login Scripts, as well as scripts run from Quick Commands or Custom Key Mappings.

System Requirements

CPU	Intel® Pentium or faster
OS	Microsoft Windows® 8 or higher
RAM	512 MB
HDD	50 MB

NETWORK TCP/IP Network

About Us

NetSarang Computer, Inc. develops and supports secure connectivity solutions in the global market. The company develops a family of PC X server and SSH client software for PC-to-Unix and PC-to-Linux, and is expanding its TCP/IP network technologies to other Internet businesses. The company offers its products and services to more than 130 countries around the world.

Contact

Address: 4701 Patrick Henry Dr. BLDG 22 Suite 137 Santa Clara, CA 95054 **Phone:** (669)204-3301

Sales inquiries: sales@netsarang.com, **Technical support:** support@netsarang.com