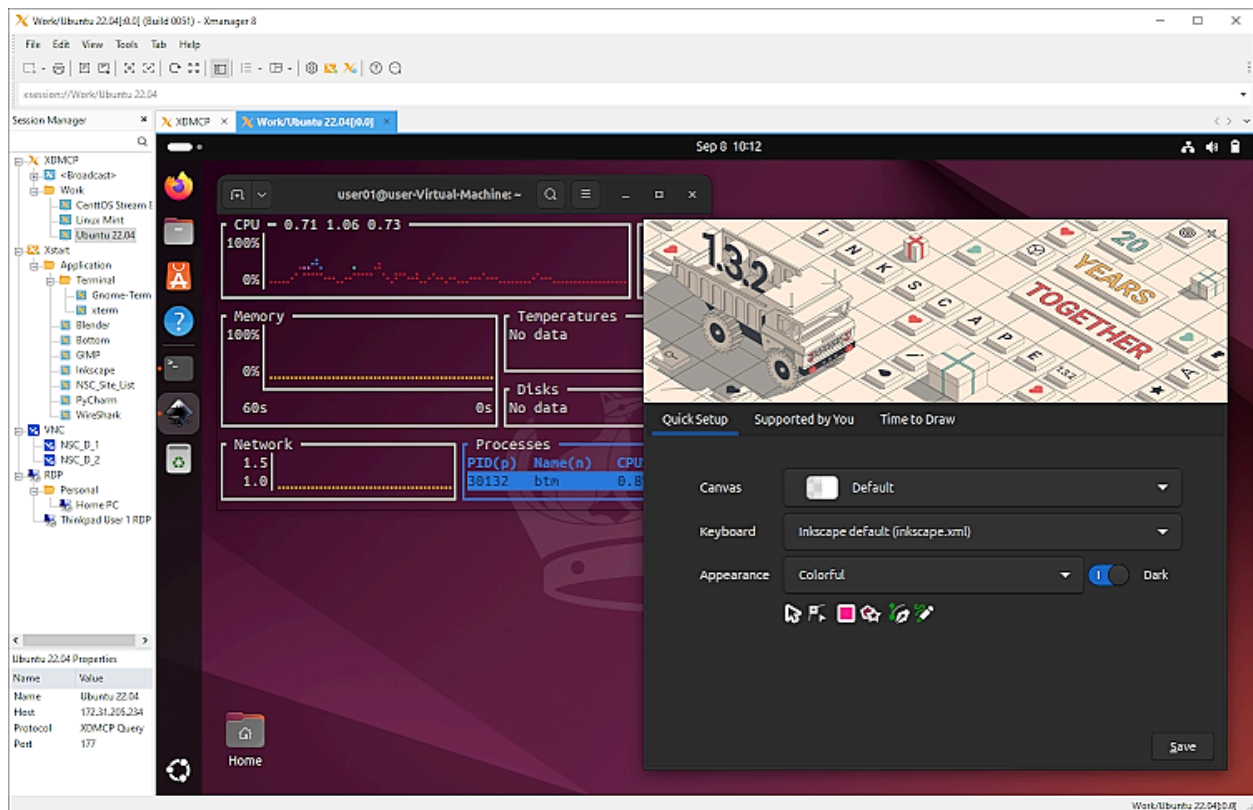




# XMANAGER

## BRING THE POWER OF X TO WINDOWS

Xmanager is an industry leading PC X server which allows you to bring the power of X applications to a Windows environment. With Xmanager, X applications installed on remote UNIX based machines run seamlessly with Windows applications side by side. It provides a powerful session management console, easy-to-use X application launcher, X server profile management tool, SSH module, and a high performance PC X server for securely accessing a remote and virtualized UNIX and Linux environments.



## BENEFITS

### Superior Performance

When utilizing a PC X server, precision and speed are essential. Xmanager 8 is a High-performance X11R7.7 PC X server and includes support for multiple X extensions for maximum usability. Support for up to 256 X client connections means you get all the power with near limitless restrictions.

### Windows and UNIX/Linux Integration

With Xmanager 8, you can bring entire UNIX/Linux desktop environments to your Windows PC. Or use the built in Xstart tool to quickly access single X applications and have them run side-by-side with your Windows applications.

### Share X Applications

X applications that run on UNIX server systems such as CAD/GIS can be shared by multiple individuals utilizing Xmanager 8. Optimize your network infrastructure while maximizing security.

### Intuitive Tabbed Interface

Xmanager 8 incorporates an intuitive tabbed interface which allows for easy session management. Have multiple sessions running side-by-side to maximize your monitors' real estate. Edit your view with a simple drag and drop to create your perfect workstation.

---

## NEW & KEY FEATURES

### Authentication Profiles <sup>NEW</sup>

Authentication Profiles are a saved set of authentication variables you can quickly apply to any session file. If the authentication information is the same for multiple sessions, simply select the authentication profile instead of repeatedly entering authentication information for each session. Additionally, if the authentication information changes due to company policy, etc., you can easily modify the authentication information for every affected session by simply editing the Authentication Profile once.

## SPECIFICATIONS

### Key Features

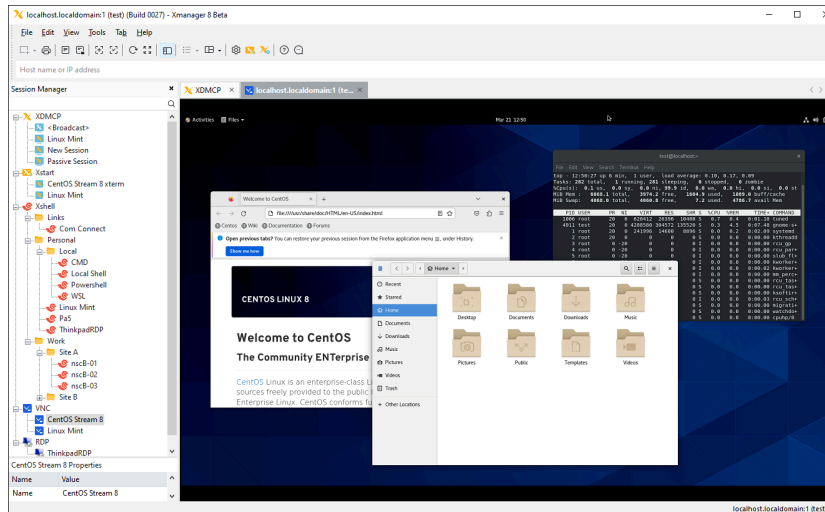
- › Authentication Profiles <sup>NEW</sup>
- › Windows Notifications <sup>NEW</sup>
- › VNC Support <sup>NEW</sup>
- › Latest Linux Support
- › RDP Support
- › Session Manager
- › Dockable UI
- › 5-Button Mouse Support
- › Supports Windows terminal server and Citrix MetaFrame
- › Silent Installation
- › Manage Xshell/Xftp Sessions
- › Tabbed environment
- › BDF, PCF font type support
- › Automatic font substitution
- › Additional font packages for each language and X applications
- › Session Filtering

### Connection and Start

- › X11R7.7 based high performance X server
- › Jump Host Proxy
- › RANDR extension
- › IPv6 support
- › XINERAMA extension
- › GLX (OpenGL 1.2) support
- › Manage multiple Xstart, XDMCP, Xshell, and Xftp sessions
- › XDMCP, SSH, RSH, REXEC, RLOGIN, and TELNET support
- › Max 256 clients per display
- › XRender support
- › Multiple server configuration
- › Multi-user support
- › Multiple monitor support
- › Multiple network card support
- › Multiple XDMCP sessions
- › Font server support

## VNC Support <sup>NEW</sup>

Xmanager manages your X11 sessions, such as XDMCP and Xstart sessions, as well as your Xshell and Xftp sessions. In Version 7, we included support for Microsoft's Remote Desktop (RDP) protocol and in Version 8, we're going even further by adding support for VNC (Virtual Network Computing) protocol. VNC can be used to remotely connect to UNIX, Linux, Windows, and MacOS machines.



- ▶ X11 forwarding feature support
- ▶ 3-button mouse emulation

## Security

- ▶ OpenSSH CA Authentication
- ▶ PKCS#11 and CAPI Support
- ▶ Master Password
- ▶ GSSAPI Support
- ▶ Integrated SSH1/SSH2 protocols with public key authentication
- ▶ Public key creation wizard
- ▶ SSH key generation wizard
- ▶ Host-based Access control

## Jump Host Proxy

Xmanager 8's Jump Host Proxy allows you to utilize an intermediate SSH server in order to reach the final destination server. As it uses OpenSSH's TCP Tunneling, this feature can be used to connect to servers that cannot directly connect to the firewall or network configuration. This feature is implemented at the SSH protocol level, and as such, a shell is not required to be running at the intermediate proxy server.

## OpenSSH Certificate Authority Authentication

Xmanager 8 can now utilize OpenSSH CAs to connect to remote UNIX/Linux servers. Utilizing a public key authenticated via a Certificate Authority reduces the server administrator's burden of registering public keys. Xmanager makes it easy to take advantage of OpenSSH's simple certificate generation and associated CA infrastructure.

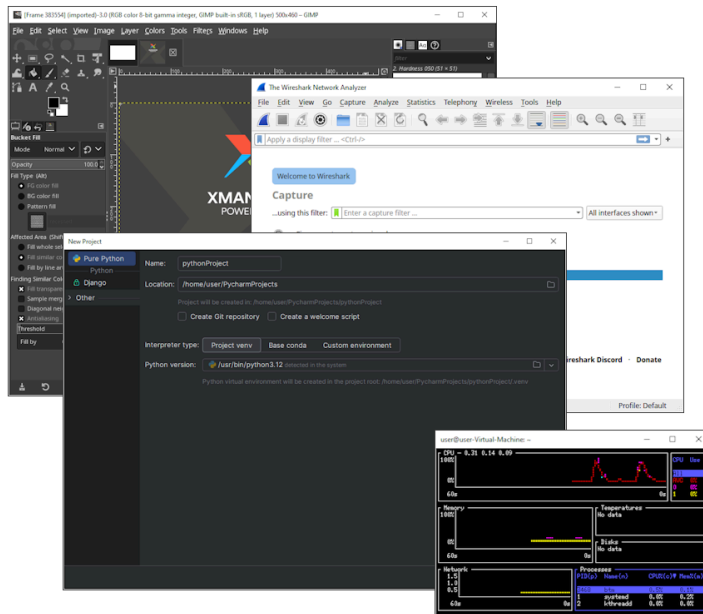
## Dynamic Search for All Available UNIX/Linux Hosts

When Xmanager 8 starts, it dynamically searches for all accessible hosts in your network. Xmanager creates dynamic sessions automatically so there is no need to set up individual sessions for each

server. With this feature, the X Window System becomes as simple as point-and-click.

## Quick & Easy X Application Launching with Xstart

Use Xmanager 8's Xstart to launch single X applications quickly and efficiently. Xstart session files can be managed from within Xmanager for easy access to your frequently accessed X applications.



## System Requirements

<b>CPU</b>	Intel® Pentium or faster
<b>OS</b>	Microsoft Windows® 8 or higher, Windows Terminal Service, Citrix MetaFrame
<b>RAM</b>	512 MB
<b>HDD</b>	200 MB
<b>LAN</b>	TCP/IP Network

### About Us

NetSarang Computer, Inc. develops and supports secure connectivity solutions in the global market. The company develops a family of PC X server and SSH client software for PC-to-Unix and PC-to-Linux, and is expanding its TCP/IP network technologies to other

Internet businesses. The company offers its products and services to more than 130 countries around the world.

**Contact**

**Address:** 4701 Patrick Henry Dr. BLDG 22 Suite 137 Santa Clara, CA 95054 **Phone:** (669)204-3301

**Sales inquiries:** [sales@netsarang.com](mailto:sales@netsarang.com), **Technical support:** [support@netsarang.com](mailto:support@netsarang.com)