



XFTP

EFFORTLESSLY TRANSFER FILES OVER A NETWORK

Xftp 8 is a powerful, yet lightweight, SFTP/FTP client for users who need to transfer files securely over a network. File transfers are simplified using features such as drag & drop, direct edit, and enhanced synchronization, transfer scheduling, and more wrapped in an intuitive tabbed interface.

| Name | Status | Progress | Size | Local Path | Remote Path | Speed | Estimate... | Elapsed T... |
|-------------------------------|----------|----------|-----------------|---------------------------|------------------------------|-------------|-------------|--------------|
| Product Lot#.jpg | Finished | 100% | 258KB/258KB | C:\Users\Alan\OneDrive... | 172.31.206.84:/home/user01.. | 1.03 MB/s | | |
| Product QC01.png | Finished | 100% | 754KB/754KB | C:\Users\Alan\OneDrive... | 172.31.206.84:/home/user01.. | 12.17 MB/s | | |
| Product QC02.png | Finished | 100% | 758KB/758KB | C:\Users\Alan\OneDrive... | 172.31.206.84:/home/user01.. | 47.38 MB/s | | |
| Product QC Issue.mp4 | Finished | 100% | 14.27MB/14.27MB | C:\Users\Alan\OneDrive... | 172.31.206.84:/home/user01.. | 21.74 MB/s | | |
| Screenshot_20231207-073259... | Finished | 100% | 78KB/78KB | C:\Users\Alan\OneDrive... | 172.31.206.84:/home/user01.. | 320.43 KB/s | | |
| Screenshot_20231207-073332... | Finished | 100% | 78KB/78KB | C:\Users\Alan\OneDrive... | 172.31.206.84:/home/user01.. | 319.71 KB/s | | |

Connected to 172.31.206.84:22. Binary File: 9 Folder: 0 17.49MB

BENEFITS

Easy File Transfers

Xftp 8 supports drag and drop between hosts so you can easily visualize the movement of files/folders. You can check the transfer window to see the progress of all your transfers and to see what is in your queue. Pause and resume file transfers as needed.

Fast and Secure

Simultaneous transfers to maximize bandwidth and FXP support dramatically reduce transfer times. Utilize SFTP for secure file transfers via the proven SSH protocol.

Management Made Easy

Xftp 8 makes managing sessions easier than ever. Whether you're working on 2 hosts or 200 hosts, optimize your workflow with features such as a tabbed environment, direct edit, synchronized navigation, and much more.

NEW & KEY FEATURES

Authentication Profiles ^{NEW}

Authentication Profiles are a saved set of authentication variables you can quickly apply to any session file. If the authentication information is the same for multiple sessions, simply select the authentication profile instead of repeatedly entering authentication information for each session. Additionally, if the authentication information changes due to company policy, etc., you can easily modify the authentication information for every affected session by simply editing the Authentication Profile once.

SPECIFICATIONS

Key Features

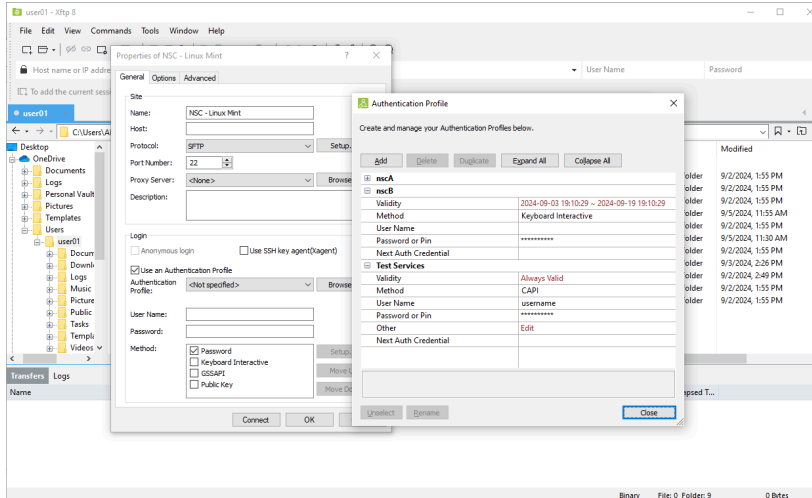
- › Authentication Profiles ^{NEW}
- › Windows Notifications ^{NEW}
- › Prioritize Downloads ^{NEW}
- › File Filtering ^{NEW}
- › Command Line Transfers ^{NEW}
- › Inheritable Session Properties
- › Quick File Search
- › Jump Host Proxy
- › SFTP and FTP support
- › Folder Bookmarks
- › Windows Context Menu Support
- › Synchronized navigation
- › Tabbed Interface
- › Keep alive options
- › Diverse proxy servers
- › FXP Support

File Transfers

- › Transfer Scheduling
- › Enhanced Synchronization
- › Transfer files simultaneously
- › Pause/Resume
- › Transfer window

Security

- › OpenSSH CA Authentication
- › PKCS#11 and CAPI Support
- › GSSAPI Support
- › AES, 3DES, BLOWFISH, CAST128, ARCFOUR, RIJNDAEL, CHACHA20 encryption algorithms
- › Master Password
- › RSA/DSA/ECDSA/ED25519 Public key, Password, and Keyboard interactive user authentication
- › SHA1, SHA1-96, SHA2-256, SHA2-512, MD5, MD5-96, and RIPEMD160 MAC algorithms
- › Zlib compression



Appearance

- ▶ Image Thumbnail Previews
- ▶ Theme Selection
- ▶ Tabbed Interface
- ▶ Customizable standard toolbar buttons

Interoperability

- ▶ Command line access with Xshell

File Filtering NEW

When connecting to a remote folder, you can now filter the types of files and folders to be displayed in the remote folder.

Command Line File Transfers NEW

Xftp 8 includes an all new program called xftpcl.exe (xftp command line). Using xftpcl, you can transfer files via the command line instead of using the GUI. Because it is command line based, it opens up new options for how you transfer files such as automating file transfers via a batch file.

Inheritable Session Properties

Session folders can now behave as templates for any new sessions created under it. You can apply changes made to a session folder to already existing sessions and subfolders as well. This feature can be useful if you need to create multiple session files with similar properties or for when you need to mass edit multiple session files.

Various Encoding Support Including Unicode

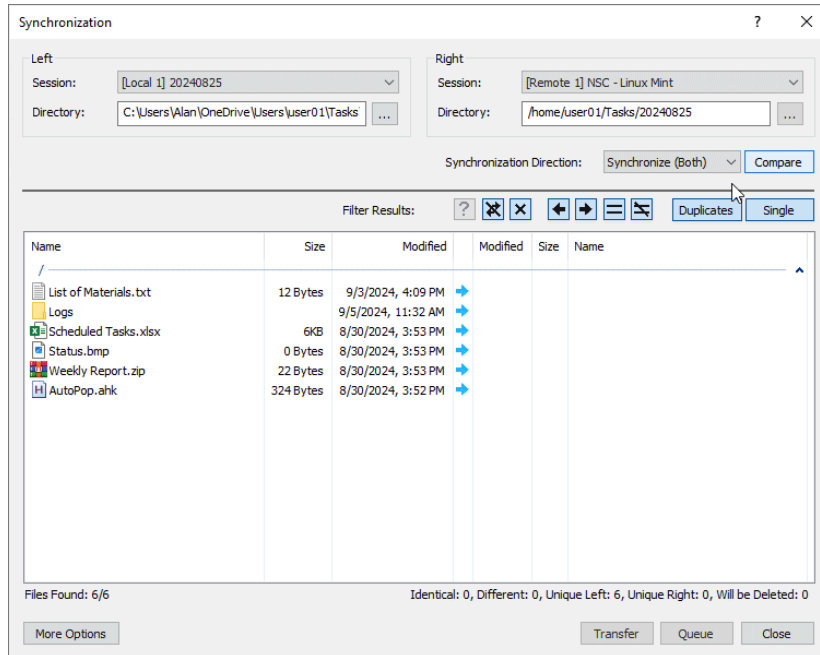
Ensure that your files can be shared internationally regardless of a file name's language. Xftp 8 supports a variety of encodings including Unicode, so file names will display correctly in various languages all within a single window.

Quick File Search

Easily search and filter the current directory's files and subdirectories with Xftp 8's Quick File Search. This feature can come in handy when you quickly need to search for files and directories to transfer, delete, etc.

Enhanced Synchronization

Xftp 8 includes enhanced synchronization capabilities for multiple files, both locally and remotely. Users can easily synchronize their local work to a remote or backup server to create a consistent environment.



Windows Context Menu Support

Right click files and folders in the File Explorer to access the Windows Context menu from directly within Xftp 8. You can now have access to third party compression and encryption programs with a single click.

Transfer Scheduling

Xftp 8 allows you to send and receive files based on user-defined time schedules. Set your schedules and let Xftp handle the rest.

Schedule

Schedule

Name: Daily Log Transfer

Start on: 9/ 5/2024 12:00:00 AM

Period: Days Sun 1 day Last day

Repeat task every: 1 hour Duration: 1 day

Source

Session Type: Local

Session: ...

Type: File Folder

C:\Users\Alan\OneDrive\Users\user01\Logs ...

%Y: year, %y: short year, %m: month, %d: day, %h: hour, %M: minute, %s: second

Destination

Session Type: Remote

Session: C:\Users\Alan\Documents\NetSarang Computer\8\ftp\Sessio ...

Path: /home/user01/Logs

OK Cancel

System Requirements

| | |
|----------------|---|
| CPU | Intel® Pentium or faster |
| OS | Microsoft Windows® 8 or higher, Windows Server 2008 or higher |
| RAM | 512 MB |
| HDD | 50 MB |
| NETWORK | TCP/IP Network |

About Us

NetSarang Computer, Inc. develops and supports secure connectivity solutions in the global market. The company develops a family of PC X server and SSH client software for PC-to-Unix and PC-to-Linux, and is expanding its TCP/IP network technologies to other Internet businesses. The company offers its products and services to more than 130 countries around the world.

Contact

Address: 4701 Patrick Henry Dr. BLDG 22 Suite 137 Santa Clara, CA 95054 **Phone:** (669)204-3301
Sales inquiries: sales@netsarang.com, **Technical support:** support@netsarang.com