

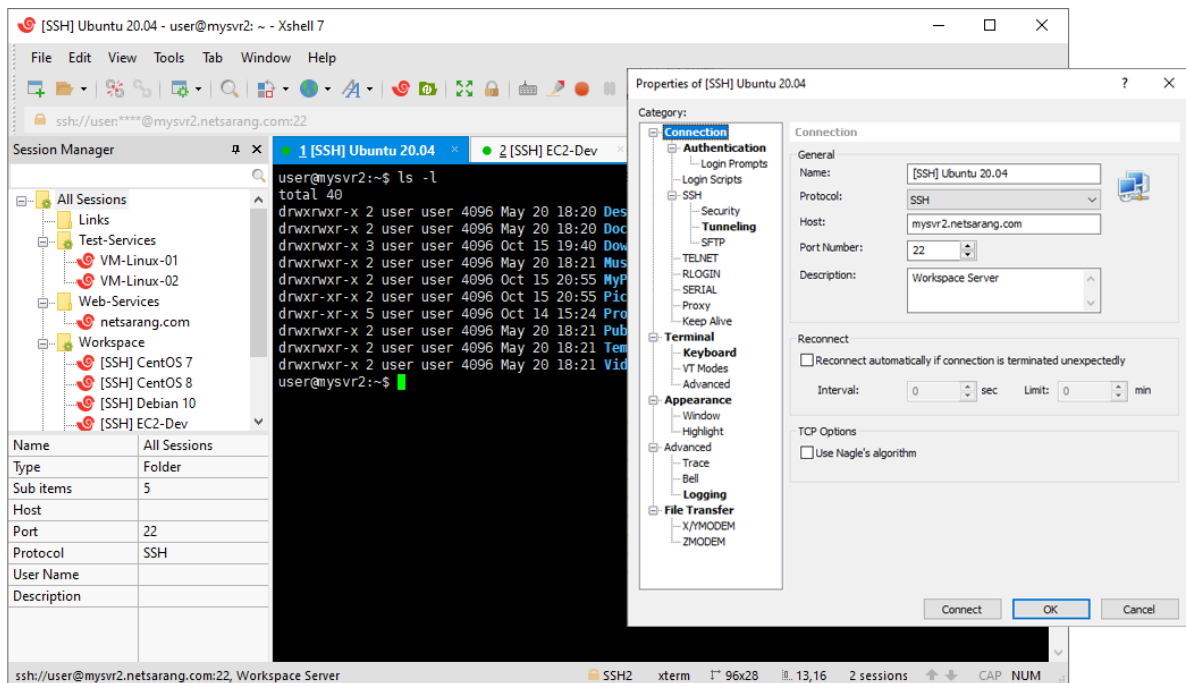
# Xshell® 7

## THE INDUSTRY'S MOST POWERFUL SSH CLIENT

Xshell is a powerful terminal emulator that supports SSH1, SSH2, SFTP, TELNET, RLOGIN and SERIAL.

Delivering industry leading performance, Xshell includes a combination of features and advantages not found in other SSH clients. Xshell 7 now makes it even easier to manage your sessions by including new features such as a Remote File Manager, Tab Manager, Script Recording, Jump Host Proxy, and more.

Also, with support for CMD, Powershell, WSL from within Xshell's Local Shell, users can access vital tools without interrupting their workflow.



## BENEFITS

### A Superior Terminal Experience

Xshell 7 allows for a multitude of customizations in order to meet that demands of today's fast paced environment. Define mouse/keyboard behavior, logging options, multi-line paste options, text editors, and more. Tailor Xshell's layout and choose what goes where all with a simple drag and drop. With Xshell 7, you're in control.

### Keep Your Data Safe

In an ever changing cyber environment, it's important to take the necessary precautions to secure your data. Xshell 7 supports

## SPECIFICATIONS

### General

- Tab Manager <sup>NEW</sup>
- Inheritable Session Properties <sup>NEW</sup>
- Script Recording <sup>NEW</sup>
- Enhanced Scripting <sup>NEW</sup>
- Jump Host Proxy <sup>NEW</sup>
- Session Manager
- Dockable UI
- Compose Pane

RSA/DSA/ECDSA/ED25516 Public key, Password, and Keyboard Interactive, GSSAPI, and PKCS#11 authentication. Encrypt your traffic with a continuously updated list of encryption algorithms and safely store session files in the cloud with Xshell's Master Password feature.

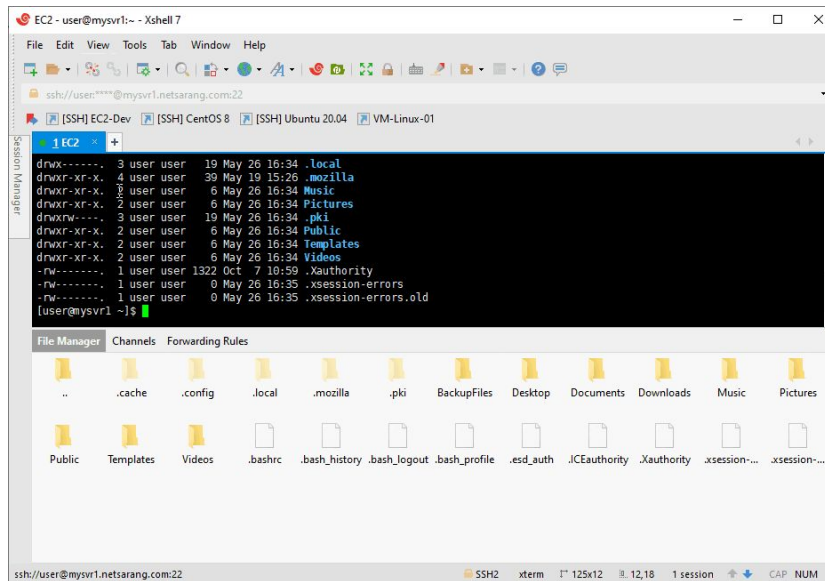
## Management Made Easy

Combining Xshell 7's powerful features with its tabbed environment allows you to interact with your sessions like never before. Optimize your workflow with features such as the Session Manager, Compose Pane, Highlight Sets, Quick Commands, Instant Tunneling, and much more. Let Xshell 7 handle the heavy lifting.

## NEW FEATURES

### Remote File Manager <sup>NEW</sup>

With Xshell 7's Remote File Manager, you can view a graphical list of the remote directory's files and it refreshes as you navigate through your remote server. With support for upload via drag and drop and downloads via the context menu, the Remote File Manager is a convenient way to manage your files directly within Xshell.



### Inheritable Session Properties <sup>NEW</sup>

Xshell 6's Session Manager is now even better in Xshell 7. Session folders can now behave as templates for any new sessions created under it. You can apply changes made to a session folder to already

- Search Web for Selected Text
- IPv6 support
- Custom key mapping
- VB, Jscript, and Python Scripting support
- Global input
- Auto reconnections
- Local Windows command support
- Detachable tabs

### Security

- OpenSSH CA Authentication <sup>NEW</sup>
- PKCS#11 Support
- AES128/192/256, 3DES, BLOWFISH, CAST128, ARCFOUR, RIJNDAEL encryption algorithms
- Kerberos Support
- Master Password
- RSA/DSA/ECDSA/ED25519 Public key, Password and Keyboard interactive user authentication
- New key generation wizard and import/export features
- SSH authentication agent forwarding using Xagent

### Tunneling

- Instant Tunneling
- TCP/IP and X11 forwarding
- Dynamic Port Forwarding (SOCKs)

### Terminal

- Real Windows CMD <sup>NEW</sup>
- Powershell and WSL Commands <sup>NEW</sup>
- SCP Command <sup>NEW</sup>
- Command Aliases <sup>NEW</sup>
- Multi-Line Paste Options <sup>NEW</sup>
- Highlight Sets
- Horizontal Scroll Bars
- Dual font support
- Compose Pane

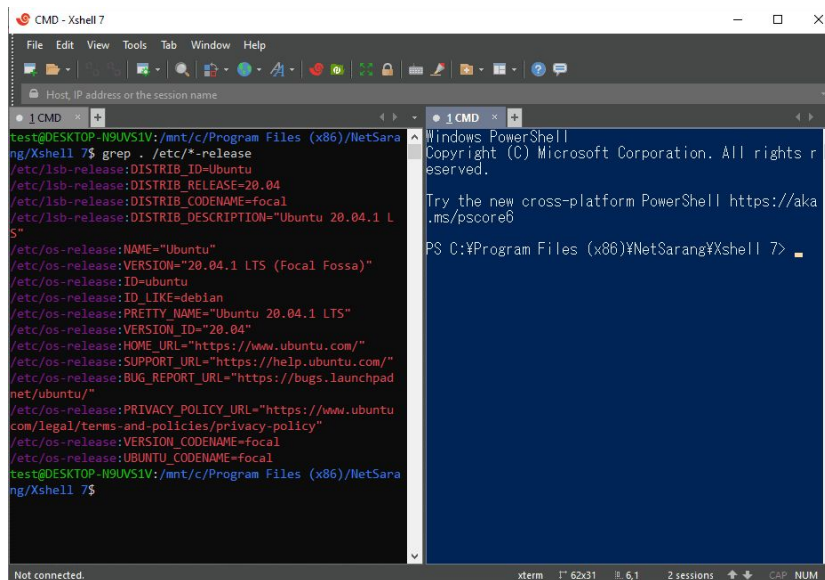
existing sessions and subfolders as well. This feature can be useful if you need to create multiple session files with similar properties or for when you need to mass edit multiple session files.

## Tab Manager <sup>NEW</sup>

Introducing Xshell 7's all new Tab Manager. It can be quite cumbersome to handle dozens of tabs across multiple tab groups, windows, and monitors. With the Tab Manager, you can quickly see which tab is where and rearrange on-the-fly.

## CMD, WSL, Powershell, Command Aliases, and more... <sup>NEW</sup>

Xshell 7's Local Shell gives you access to vital tools directly within Xshell. Access Real Windows CMD directly within Xshell using the 'realcmd' command. With support for custom Command Aliases, you can define aliases to run commands, open sessions, and more.



## Enhanced Scripting <sup>NEW</sup>

Script Recording allows you to automatically generate script based on input (send) and output (expect) which can be used as a foundation to create more complex and versatile script. Also, Xshell 7 now allows you to target other sessions with your script instead of being confined to a specific session.

## Jump Host Proxy <sup>NEW</sup>

Xshell 7's Jump Host Proxy allows you to utilize an intermediate SSH server in order to reach the final destination server. As it uses Open-SSH's TCP Tunneling, this feature can be used to connect to servers that cannot directly connect to the firewall or network

- ▶ Bell/Alarm Options
- ▶ Supports SSH1, SSH2, SFTP, TELNET, RLOGIN and SERIAL protocols
- ▶ Supports VT100, VT220, VT320, XTERM, LINUX, SCOANSI, and ANSI terminals
- ▶ Full Screen view
- ▶ Keep-alive option
- ▶ Line spacing and margin
- ▶ Dynamic port forwarding and Instant tunneling
- ▶ Address bar for quick connection
- ▶ Login script support
- ▶ International output encoding
- ▶ Multi-byte support in copy & paste
- ▶ Bold font and ANSI color escape sequences

## Appearance

- ▶ Dockable UI
- ▶ Theme Selection
- ▶ Layout management
- ▶ Tabbed environment
- ▶ Color scheme edit/import/export feature

## Interoperability

- ▶ X11 forwarding with Xmanager
- ▶ File transfers with Xftp

## File Management

- ▶ Remote File Manager <sup>NEW</sup>
- ▶ File transfer using X/Y/ZMODEM
- ▶ File send and receive via SFTP
- ▶ ASCII file upload
- ▶ Send Delay
- ▶ Automatic session logging

configuration. This feature is implemented at the SSH protocol level, and as such, a shell is not required to be running at the intermediate proxy server.

## System Requirements

<b>CPU</b>	Intel® Pentium or faster
<b>OS</b>	Microsoft Windows® 7 or higher
<b>RAM</b>	512 MB
<b>HDD</b>	50 MB
<b>NETWORK</b>	TCP/IP Network

---

### About Us

NetSarang Computer, Inc. develops and supports secure connectivity solutions in the global market. The company develops a family of PC X server and SSH client software for PC-to-Unix and PC-to-Linux, and is expanding its TCP/IP network technologies to other Internet businesses. The company offers its products and services to more than 130 countries around the world.

### Contact

**Address:** 4701 Patrick Henry Dr. BLDG 22 Suite 137 Santa Clara, CA 95054 **Phone:** (669)204-3301  
**Sales inquiries:** sales@netsarang.com, **Technical support:** support@netsarang.com